



Events

Networks live from personal contacts: Therefore, the FEI offers numerous occasions or contributes to meetings by taking part.

In spring, the FEI invites each year to its cooperation forum in Bonn (in which the student competition TROPHELIA is included), in autumn to its annual meeting at different locations. In addition, the FEI coordinates and organizes numerous workshops and meetings: meetings of the Board, the Scientific Committee and for each project the meetings of the project advisory committee. On European level, the ETP and the NTP meetings are to be mentioned.

Bildunterschrift Herr Jacobi
2 bis 3 Zeilen, Bildunterschrift
Herr Jacobi 2 bis 3 Zeilen,



You need more informations?



Main office Bonn:
Research Association of the
German Food Industry (FEI)
Godesberger Allee 142-148
53175 Bonn, Germany
Telephone +49 228 3079699-0
Fax +49 228 3079699-9
E-mail fei@fei-bonn.de
www.fei-bonn.de

EU office Brussels:
EU office FEI
47-51, Rue du Luxembourg
1050 Brussels, Belgium
Telephone +32 2 2820840
Fax +32 2 2820841
E-mail gfpi-fei@bdp-online.de
www.fei-bonn.de/en



TROPHELIA:
Food innovation from Germany

The best out of big ideas from different student teams is presented at the European competition ECOTROPHELIA:
<https://www.ecotrophelia.eu/>



We promote
collective research
for the food industry



The Research Association of the German Food Industry (FEI) is a non-profit, registered association supporting research projects in all fields of food science, food technology and nutritional science.

The FEI connects food industry and food science on German and European level. In particular for small and medium-sized enterprises (SMEs) it facilitates the cooperation with renowned scientists and offers active participation in collective research projects and their public funding.

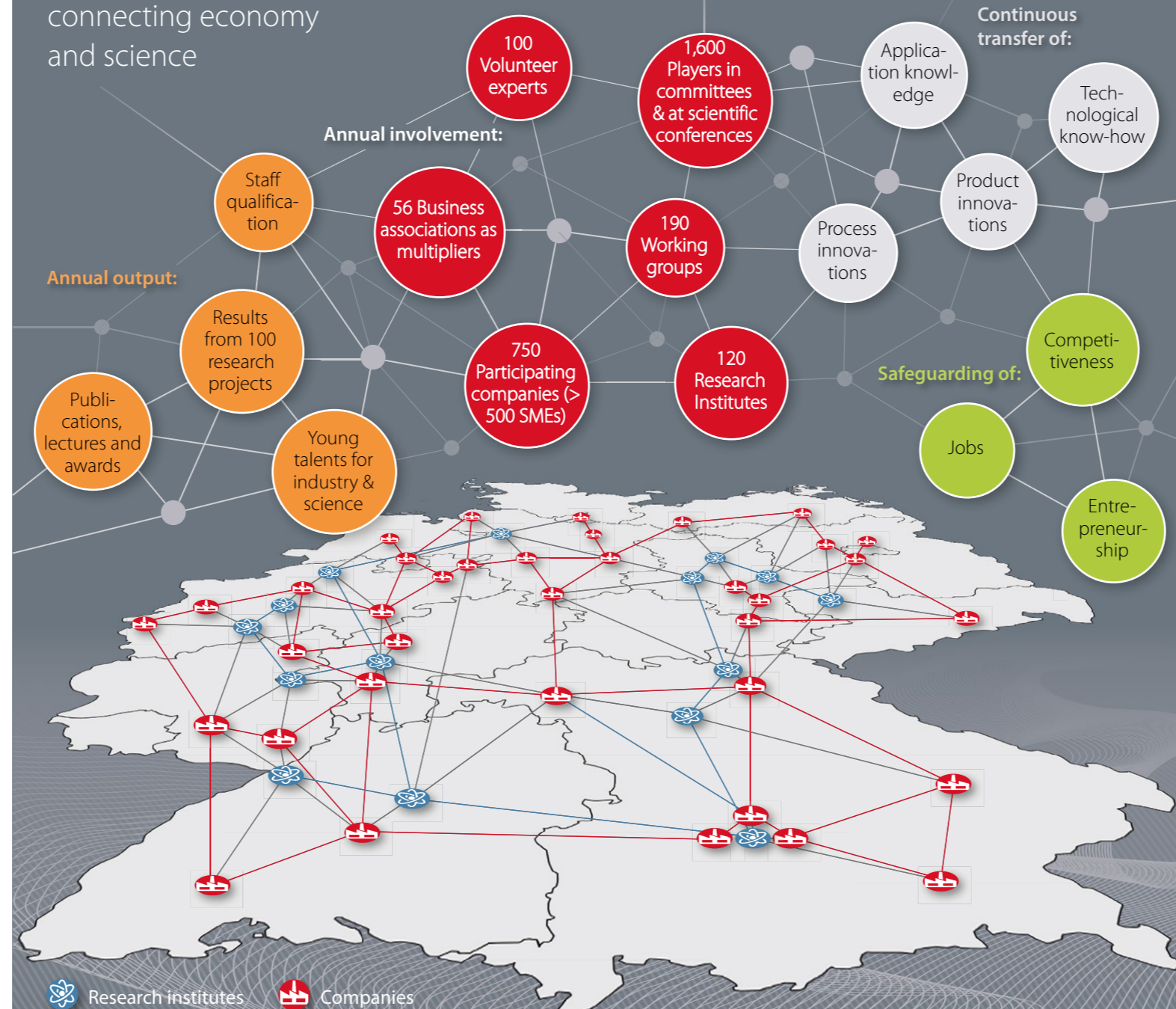
The aim of each research project of the FEI is to advance all sectors:

- with results of a broad impact.
- with results that can be implemented in practice.
- with results of which especially SMEs benefit because they don't have resources for their own research.

For this purpose the FEI has created a network of companies, research institutes and business organizations, giving impetus for progress: Synergy effects are generated which make it possible to translate knowledge quickly into new products and processes. In all FEI activities, the focus is on the food industry as a whole, not only on single companies.

For scientists, the FEI provides advice on national and international research programs, a professional project management and the chance to co-operate on a sustainable level with companies in the food industry.

The Network of the FEI – connecting economy and science



The FEI aims to promote research, networking and young talents.

Promotion of research

Main focus of FEI activities is the promotion of collective research projects for the food industry and its economic environment. This is possible thanks to a program promoting the well-known "German Mittelstand": The Industrial Collective Research (IGF). Within this program, the above-mentioned research projects are realized. The financing of the projects is provided by public funding (Federal Ministry of Economic Affairs and Energy) and private funding (enterprises and industrial associations). CORNET ("Collective Research Network") supports to expand German IGF projects through parallel activities in other EU countries. Thus, it is possible to conduct IGF projects on a transnational level – as European cooperation projects, creating synergies across borders.



Promotion of networking

A key objective of the FEI is to connect actors from science and industry with each other – on national, European and international level. This is enabled to be done by promoting research, by the FEI's institutional embedding in national and international networks and by its own EU office in Brussels, besides its main office in Bonn. The European Technology Platform (ETP) "Food for Life" serves to connect research partners from industry and science. As representative of the German food sector, the FEI is embedded in all committees and working groups of the ETP. The ETP develops a long-term vision of the sector and identifies research and innovation priorities on the European level. Many EU members have their own National Technology Platform (NTP) for the food sector. For Germany, the FEI acts as the NTP Food. www.fei-bonn.de/etp-food (in German)



Promotion of young talents

By coordinating IGF projects, the FEI supports to qualify young talents at universities throughout Germany and Europe. These young scientists will be the experts, managers and entrepreneurs of the future! By this, the food industry and its economic environment benefits for many decades. For students, the FEI organizes the annual competition TROPHELIA. In an exciting team to team race the best ideas for innovative and ecological food products are wanted.